

BUILD ADHOC-OLAP SYSTEMS

Within your company, there are a number of business decisions made in every department, everyday. Decision makers across your enterprise are expected to understand the business and take the appropriate action to move it forward. With access to relevant and timely information, employees, managers and executives can make the best decisions that generate the best results.

This is what is OLAP for. OLAP (Online Analytic Processing) systems are a category of database software which provides an interface such that your users can transform or limit raw data according to user-defined or pre-defined functions, and quickly and interactively examine the results in various dimensions of the data.

instantOLAP® enables companies to easily build and deploy such OLAP systems with a minimal technical overhead.

REALTIME PERFORMANCE

In difference to other OLAP systems, *instantOLAP®* does not pre-aggregate or copy data into a separate, multidimensional or otherwise specially organized database. All needed data is loaded out of your relational databases (or other datasources) and transformed in realtime!

The databases don't need to have any special structure, there is no restriction. Nearly every possible structure can be used as datasource. And even better, you can use an unlimited number of datasources in your configurations and combine

their data inside your reports.

The realtime capabilities of *instantOLAP®* mean both a faster modelling and testing of the servers and more timely information for the users of your OLAP system.



A number of highly effective optimizing- and caching technics provide a high performance. For example, no value is queried twice from a datasource, every value is cached and shared between all users.

SYSTEM ARCHITECTURE

instantOLAP® is completely written in Java, the platform-independent programming language from Sun Microsystems.

The system has a clear 4-tier architecture and is split into three components: The backend web-services, the web-frontend and the administration tool.

The backend and frontend-server can run on the same machine or they can be installed on different machines. You also can use an unlimited number of frontend- with one backend-server for load-balancing.

WEB-SERVICES

The web-services are the powerful backend of *instantOLAP®*. All database-connectivity, realtime multidimensional transformation, optimizing, user-management, caching etc. is done by the backend.

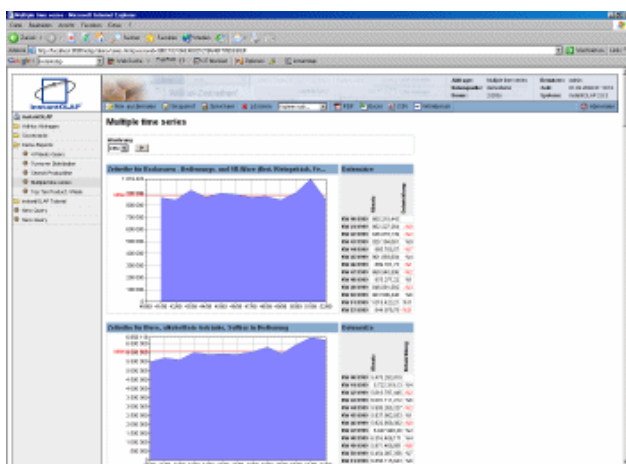
The web-services are fully XML-based, every metadata is stored in simple, human readable XML-files. Backing up your OLAP system, deploying reports from development- to production-servers or version control becomes an easy task.

The web-services have a standard web-service API and are also usable from other programming languages than Java, too.

WEB-FRONTEND

The user frontend of *instantOLAP®* is 100% web-based and very easy to use.

After a user has logged in, he can choose on out of the predefined queries the administrator granted access for him. Access-control is based on accounts and roles.



Picture: The web-frontend

Queries in *instantOLAP®* are more than simple tables – query designers have a wide range of formatting possibilities:

- Data can be displayed as pivot-table, business-chart, newsticker and other formats.
- Queries can be combined out of an unlimited of sub-reports.
- The data can be directly loaded out of the cubes or be computed with formulas.
- Titles, borders, colors, fonts, chart-properties and anything else can be freely defined or computed with formulas.
- Table cells can display images, rotate their text, show exceptions or contain links to other reports or applications.

instantOLAP® has also an impressive number of interaction possibilities inside queries:

- Drilldown inside pivot-tables and charts.
- Link table-cells or charts to other queries.
- Filter queries with a various number of selectors (combo-boxes, range-selectors, search fields and more).
- Stack a number of tables or charts with tabs to save space.
- Change data inside tables and store in back to the datasources.

After a user has chosen which data he wants to see, he can save his settings or export reports to Excel, PDF or CSV-files.

He also can take and store snapshots of reports, comment them and make them public for other users.

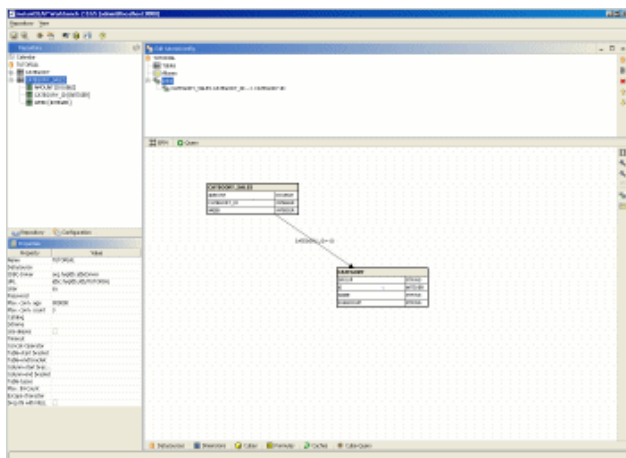
WORKBENCH

With the *instantOLAP®* Workbench, the system administrators can easily create configurations or queries and manage the system.

The Workbench is a stand-alone desktop-application (also written in Java) with a comfortable Drag&Drop handling and a modern Look&Feel. Because the workbench communicates with the backend via web-services, administrators can remote-control servers from everywhere.

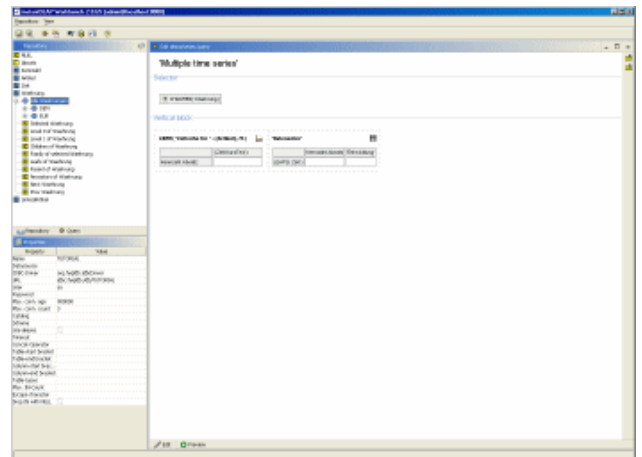
The workbench is mainly used to create configurations and queries. Configurations define, which datasources will be accessed, how dimensions will be created and how measures will be loaded out of the databases or computed with formulas.

Numerous tools like ERM-diagrams, database-explorers and query-tools, the integrated debugger and many more help the administrators concentrate on his real task: Extracting important business-information out of the databases.



Picture: The configuration editor

The query-editor let administrators and power-users create queries with a few number of mouse-clicks.. Queries are designed in a schematic worksheet-view. All dimensions, measures, key, colors etc. can be dragged onto the worksheet to extend your query. Queries can be previewed inside the Workbench at any time.



Picture: The query editor

Though creating a query is very simple, the Workbench gives users all possibilities to configure all elements inside queries the way they want. Whenever an element is selected, all its properties will be shown in the property-view and can be changed or replaced by formulas.

Beside creating queries or configurations, the Workbench has a number of other administration-functions. Models can be started, stopped or rebuild, caches can be viewed or cleared and the repository, containing all configurations and queries, can be managed.

For more information contact:

www.instantOLAP.net

info@instantOLAP.net

VIRTUAL WAREHOUSE

- Use a unlimited number of datasources
- Read from relational databases (via JDBC)
- Read from OLAP-systems (via OLE DB)
- Read from text-files (CSV)
- Efficient caching-systems

VIRTUAL OLAP

- Use measures, dimensions and hierarchies
- Calculate measures using complex formulas
- Powerful expression-language
- Realtime backtracking to datasources
- No cube-precomputing

SECURITY

- User/Role based security management
- Standard connectors for different types of user-databases (e.g. for Windows nameserver, LDAP, Databases, RAC/F and others)
- Grant or deny access to queries for single users or roles
- Grant or deny access to dimensions or parts of dimensions for single users or roles
- HTTPS enabled

USER INTERFACE

- 100% web-based
- Easy-to-use interactive and linked reports
- Multi-reports with tables, charts and more
- Save and comment snapshots
- Export to PDF, Excel and CSV

AUTOMATION

- Send reports as email (PDF-Format)
- Compute and store snapshots

ADMINISTRATION

- Powerful development environment with drag&drop
- Create configurations and queries
- Query-Preview
- Remote model- and user-management
- Visual and XML-View for each element
- Integrated debugging tool

TECHNIC

- 100% implemented in Java
- Platform independend
- Fully XML-based
- Pluggable user-management
- Customizable frontend
- Webservice-API

SYSTEM REQUIREMENTS

- J2EE 1.3 enable Web-Server (e.g. Tomcat 4.0 or higher, IBM Websphere 5.0 or higher, BEA Weblogic 5.0 or higher,
- Java JDK 1.3 or higher (JDK 1.4 recommended)
- Platform-independend (testet on Windows NT/2000 /XP, Linux, Sun Solaris, z/OS, and AIX)
- Pentium IV 1 GHz or better
- 512 MB memory or more
- 1 GB hard-disk space or more